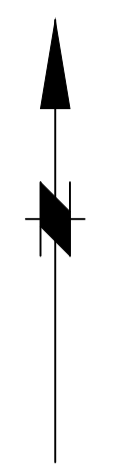
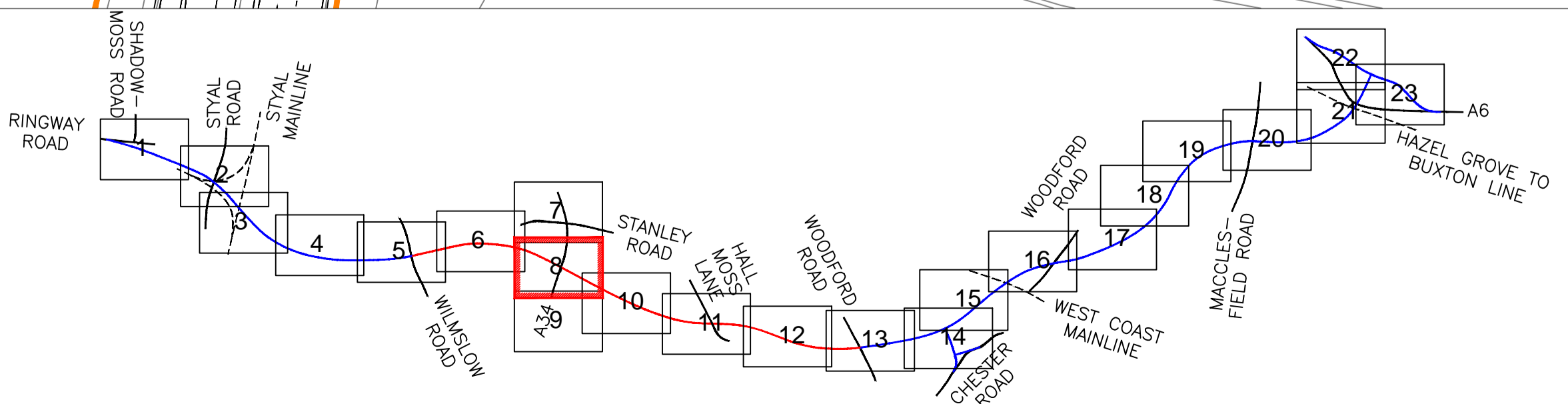
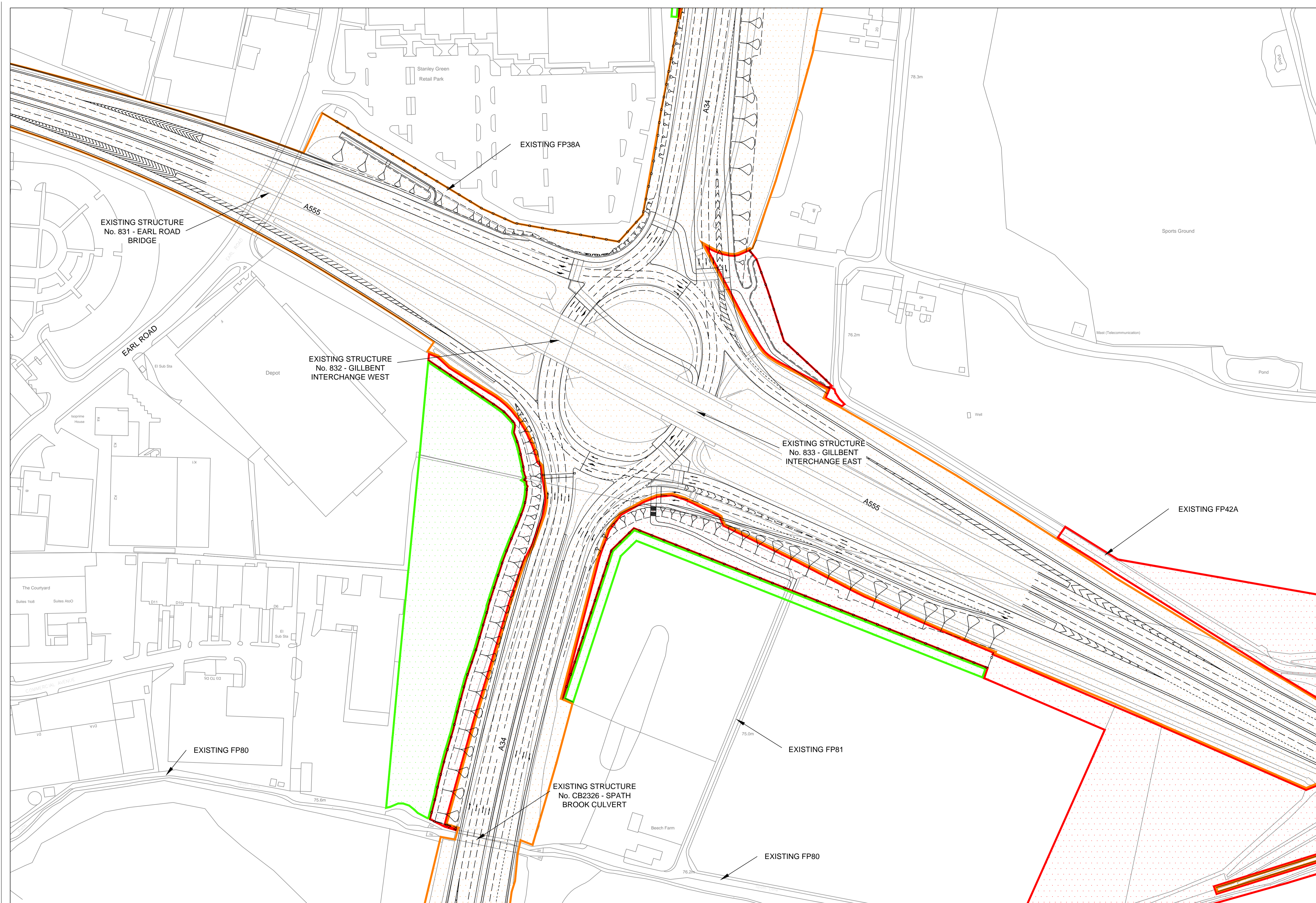


This map is reproduced from Ordnance Survey material with the permission of Ordnance Survey on behalf of the Controller of Her Majesty's Stationery Office. © Crown copyright. Unauthorised reproduction infringes Crown copyright and may lead to prosecution or civil proceedings. Stockport Metropolitan Borough Council 100019571 2012



- LAND REQUIRED FOR THE SCHEME (PERMANENT)
- LAND REQUIRED FOR THE SCHEME (TEMPORARY) MATERIAL STORAGE/COMPOUNDS/WORKING SPACE ETC
- LAND REQUIRED FOR THE SCHEME (EASEMENT)
- EXISTING LOCAL AUTHORITY LAND REQUIRED FOR THE SCHEME



Rev.	Drawn	Checked	Date	Revision Details

www.semmms.info

Jfm McMahon BSc, CEng, MCE
 SERVICE DIRECTOR, MAJOR PROJECTS
 STOPFORD HOUSE
 STOCKPORT SK9 3YE
 TEL : 0161 474 4351
 FAX : 0161 474 4833

Job Title
A6 - MANCHESTER AIRPORT RELIEF ROAD

Drawing Title
**PLANNING APPLICATION
 BLOCK PLANS
 EXISTING SHEET 8**

Drawn SEB/DP	Engineer SP	Checked NH	Approved AB
Date 03.10.13	Date 03.10.13	Date 03.10.13	Date 03.10.13
Size A1	Scale 1:1000		
SGC No.	Filename		
Drawing No. 1007/3D/DF7/A6-MA/PABP/E/008	Revision		